



How Notes are Named in the Treble Clef

Name: _____ Class: _____

The Staff: Music is written on a five line staff. Notes can be placed on lines or in spaces. The lines and spaces are numbered from the bottom to the top. At the beginning of a staff a clef is given. The *treble clef* circles the note G, and is used for treble, or higher notes.



A treble clef staff with a 4/4 time signature. The lines are numbered 1 to 5 from bottom to top. The spaces are numbered 1 to 4 from bottom to top. Notes are placed on each line and space with their letter names written below them: E (line 1), G (space 1), B (line 2), D (space 2), F (line 3), A (space 3), C (line 4), and E (space 4).

Write the letter name of the notes found on the lines. Use capital letters.

1. _____

2. _____

3. _____

Write the letter name of the notes found in the spaces. Use capital letters.

4. _____

5. _____

6. _____

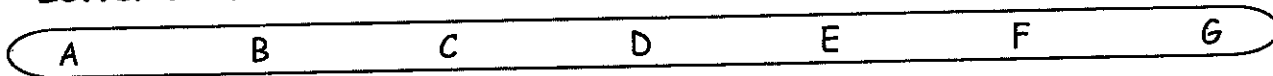


Letter Names in the Treble Clef

Name: _____ Class: _____



Letter Names: The first seven letters of the alphabet are used to name notes:



When you play an instrument, you use letters to name notes. You can remember the names of the notes on lines and spaces by using different words.

The notes on the lines can be remembered with **Every Good Boy Does Fine**. Create your own words to remember the names of the notes found on the lines:

E _____ G _____ B _____ D _____ F _____

The notes in the spaces spell **F A C E**. Create your own words to remember the names of the notes found in the spaces:

F _____ A _____ C _____ E _____

Name all of the notes. Circle the notes that are found on **LINES**:

1.

2.

Name all of the notes. Circle the notes that are found in **SPACES**:

3.

4.



Naming Notes

Name: _____ Class: _____

The first seven letters of the alphabet are used to name notes. A B C D E F G and then the letters begin from A again. You can see the names of the notes on the music staff beginning on C:

Name the following notes. You may use the music staff shown above as a guide:



1.

2.

3.

4.


5.

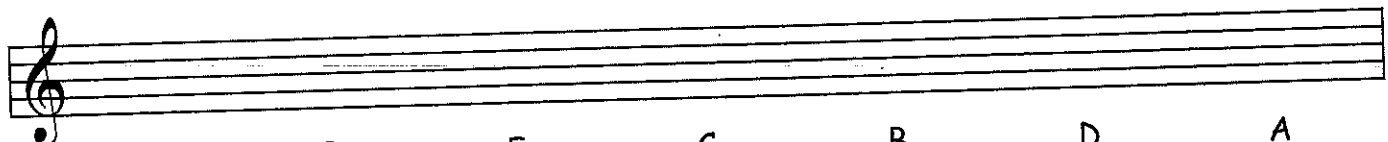


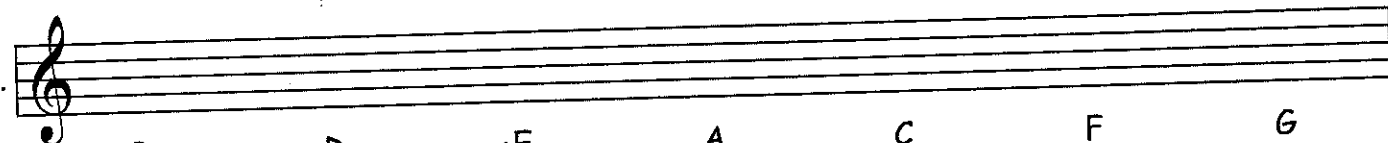
Writing Notes on the Music Staff

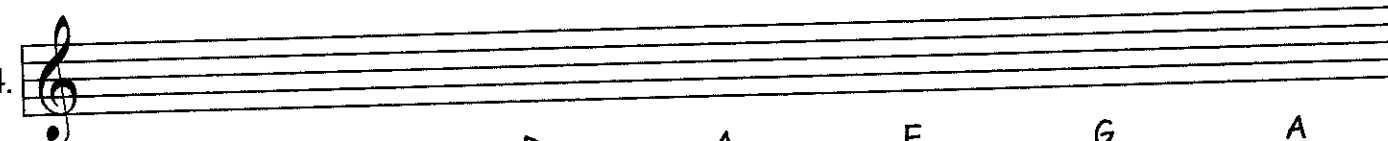
Name: _____ Class: _____

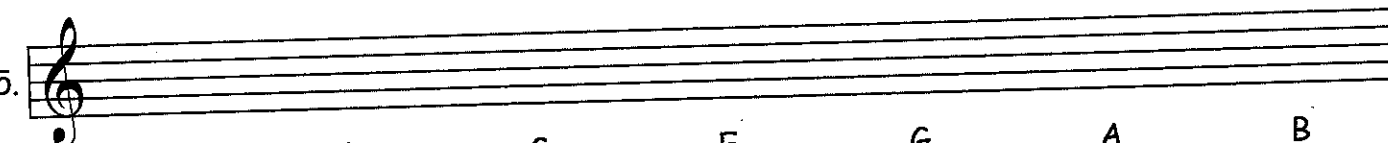
Write the following notes on the music staff using whole notes. If a note can be written in two places, write one note above the other.

1. 
 C D E F G A B

2. 
 G E F C B D A

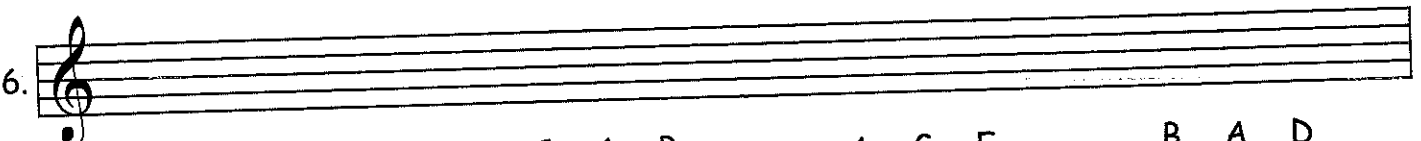
3. 
 B D E A C F G

4. 
 E C D A E G A

5. 
 C B G E G A B

Spell the following words using whole notes on the music staff below:



6. 
 D A D C A B A G E B A D

Music Riddle 1

What instrument can you carry around in your ear? _____



Word Maker

Name: _____ Class: _____



The notes on the staff are:

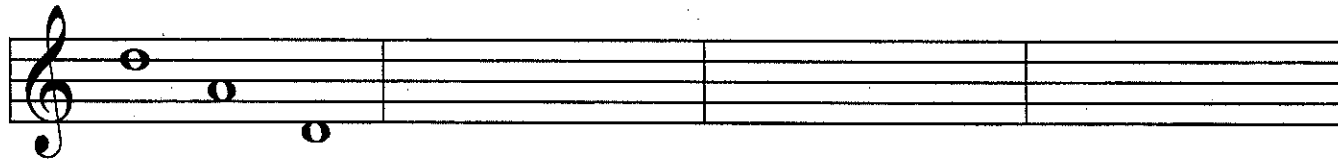


Think of words that can be spelled using only these letters. Write your words in the box below:

D A D		
_____	_____	_____
_____	_____	_____
_____	_____	_____
_____	_____	_____

Using whole notes, spell your words on the music staff. Write the name of each note on the line underneath. The first example has been done for you.

In the treble clef:



D A D

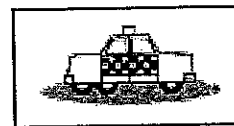


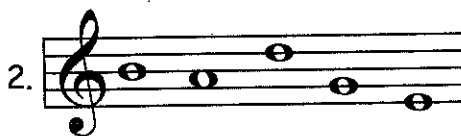


Note Name Match 1

Name: _____ Class: _____

do: Write the words that each set of notes spell. Then draw a line from the word to the matching picture.

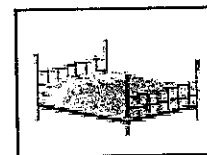


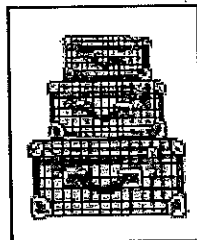


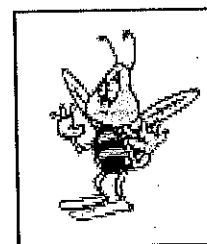




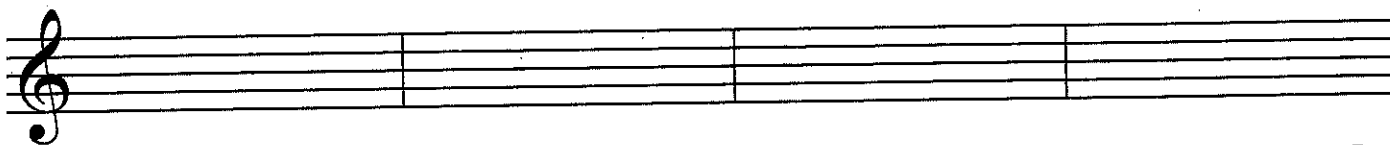








Spell the following words on the music staff using whole notes:



8. B A D E 9. D E A F 10. E D G E 11. F A C E



12. D E E D 13. F A D E 14. F E E D 15. B A D